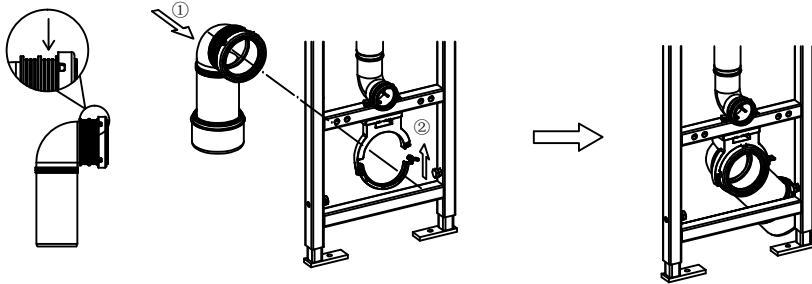
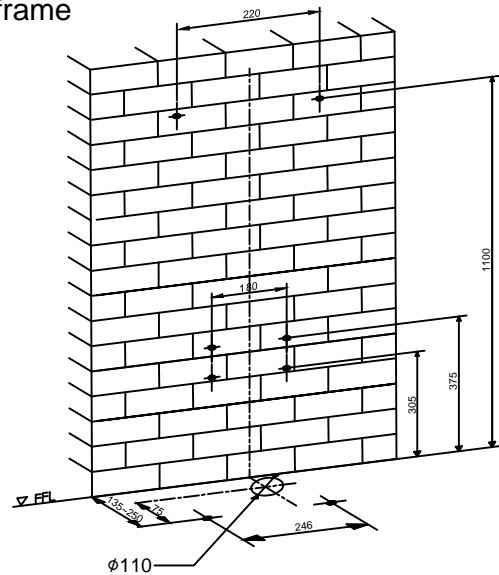


## 1. Install the flush pipe

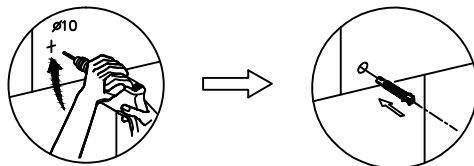


## 2. Install the frame

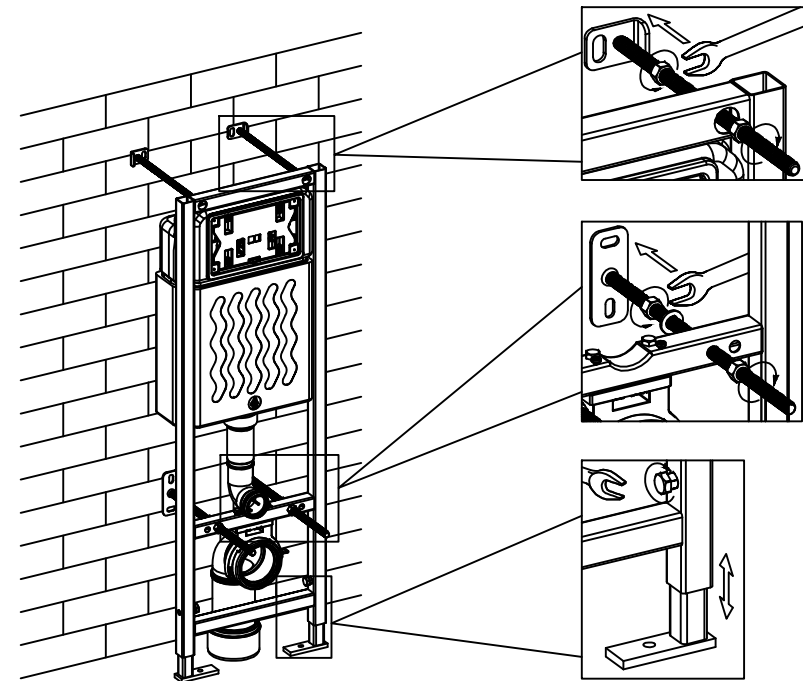
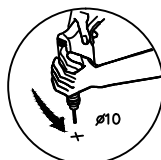


Make marks on the wall and floor

Drill  $\phi 10$  holes on the wall where were marked and press expansion nuts onto the holes

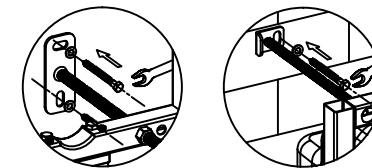


Drill  $\phi 10$  holes on the wall where were marked



Put the frame close to the wall. Adjust the bolts and adjustable fixing kits to align the frame with the holes on the wall and floor. Then screw the nuts to fasten the frame.

Use washers and wood screws to fasten the frame onto the wall.



Use steel expansion nuts to fasten the frame onto the floor.

